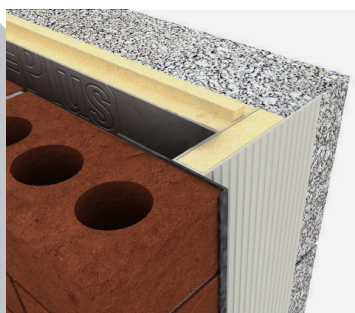
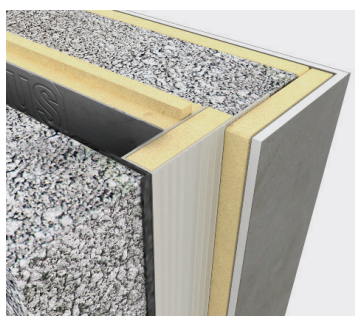


Close-R

Insulated Cavity Closer

Walls

Delivering cost effective
solutions to prevent cold
bridging, damp penetration,
air infiltration and condensation



Xtratherm[®]

More than insulation

Close-R

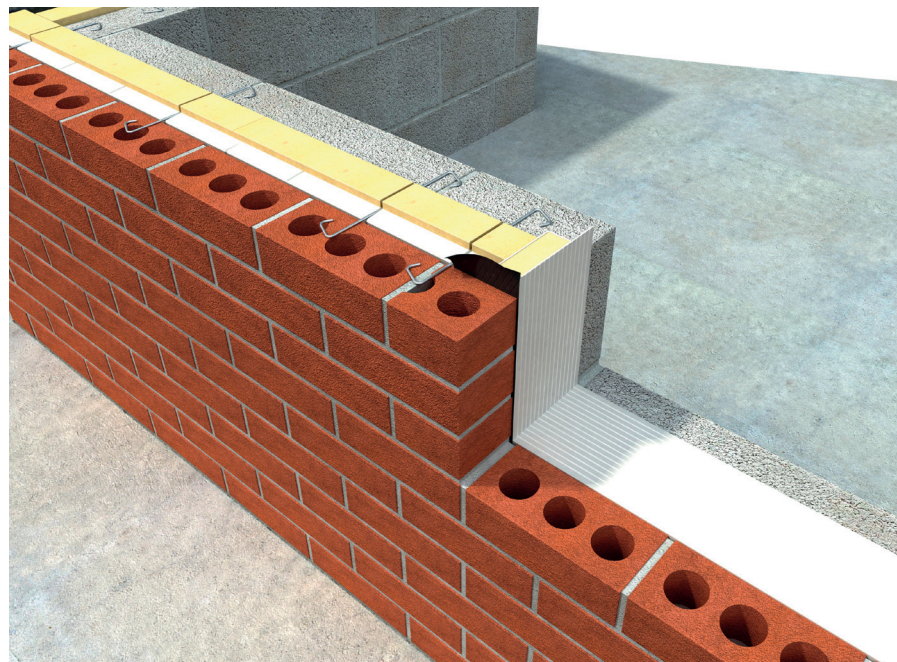
Insulated Cavity Closer

XT/Close-R

Insulation
Accessories

Xtratherm Close-R fully insulated cavity closers are a cost effective solution for builders and specifiers for the closing of cavities around window and door openings, preventing cold bridging, damp penetration, air infiltration and condensation.

The Close-R range is used to close cavities and is suited to all types of windows and doors and is available in sizes to fit cavity widths from 100mm - 150mm, with checked detail to suit brick or drylined specifications and flanged detail to suit block outer facings. (Flanged detailing requires precise construction tolerances.)



Saves Time

Cost effective

Suits 100 - 150mm cavities

Meets new Part L requirements

Available from Builder Merchants

Xtratherm®

Building Regulations

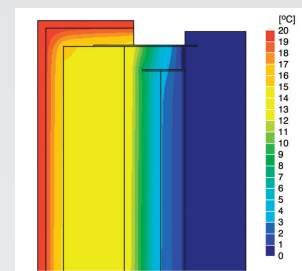
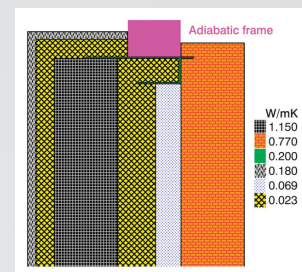
The recently revised Part L of Irish Building Regulations places great emphasis on detailing at junctions. It has recognised the need to improve traditional junction performance as wall U-Values improve.

Targets for junction thermal performance are set in the BRE Paper IP1/06 and asks that a value of 0.05 be achieved. In the past where a typical wall U-Value was between 0.37 and 0.27, the 0.05 target was easily achieved using the traditional 25mm strip at the reveal.

However when pushing the wall U-Values to 'A or B' rated values the junctions actually fail IP1/06.

Xtratherm Close-R has been independently tested to exceed the new standards.

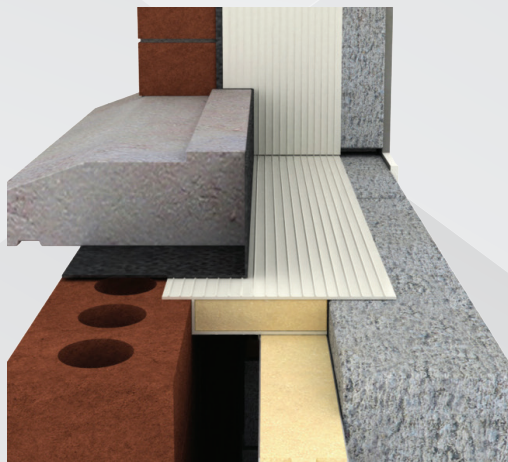
Thermographic measurement - Best Practice with liner



It has been estimated that up to 30% of the heatloss in a well insulated house is through 'Non Repeating Thermal Bridges' at wall/floor junctions, corners, reveals, ceiling junctions heads and sills.

Appropriate detailing to ensure the 'Continuity of insulation' is now asked for by Part L, and this continuity can be satisfied by following details provided by the Department of Housing, Local Government and Heritage in their publication 'Acceptable Construction Details TGD Part L Building Regulations 2021- Introduction'. Using these details will allow the BER assessor to ascribe a good score to the detailing section within DEAP with a Y-value of 0.08, following the Enhanced Details using the Close-R system with insulated drylining may allow a Y-value of 0.04 to be used - a substantial improvement.

Installation Guidelines



If precise fitting of windows can not be guaranteed, a checked reveal using a vertical DPC should be used.

Any jointing of Close-R should be facilitated within 150mm of the opening head. Close-R should be extending by 50mm past the sill closer.

When sills are horned into the facing outer leaf, the reveal Close-R should be trimmed around the concrete sill and extend 50mm into the cavity.

Horizontal DPCs should be used with the sill as normal, with a lining of 40mm Polyiso placed at the back of the concrete sill.

Should clarification be required, contact Xtratherm Technical Support prior to installation.

XT/CW (T&G) Partial Fill

Wall U-Value	XT/CW (T&G)	Thermal Liner	IP1/06 Psi Target	Measured Psi-value
0.21	80mm	-	0.05	0.001
0.18	100mm	-	0.05	0.002
0.16	110mm	-	0.05	0.003
0.18	60mm	50.5mm	0.05	0.005

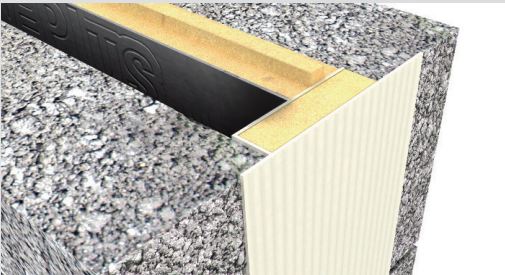
CavityTherm (CT/PIR) Built-In Full Fill

Wall U-Value	CT/PIR	Thermal Liner	IP1/06 Psi Target	Measured Psi-value
0.20	100mm	-	0.05	0.003
0.18	110mm	-	0.05	0.003
0.16	125mm	-	0.05	0.004
0.13	150mm	-	0.05	0.005

Flanged fit - Concrete Outer

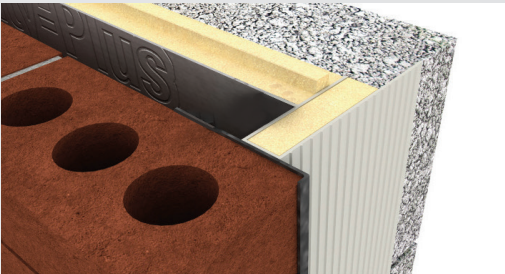
Xtratherm®

This method requires precise construction to facilitate accurate window fitting against Close-R



Length	Cavity Width	XT/CW (T&G)
		Thickness
2400mm	100mm	Max 60mm
2400mm	110mm	Max 60mm
2400mm	120mm	Max 80mm
2400mm	140mm	Max 100mm
2400mm	150mm	Max 110mm

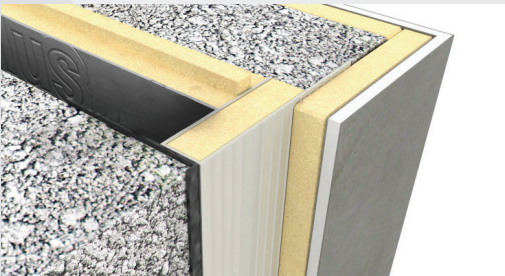
Checked fit - Brick Outer



Length	Cavity Width	XT/CW (T&G)
		Thickness
2400mm	100mm	Max 60mm
2400mm	110mm	Max 60mm
2400mm	120mm	Max 80mm
2400mm	140mm	Max 100mm
2400mm	150mm	Max 110mm

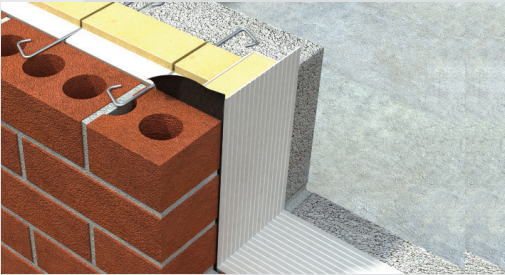
Checked fit -Plus Thermal Liner

(Enhanced Accredited Detail)



Length	Cavity Width	XT/CW (T&G)
		Thickness
2400mm	120mm	Max 80mm

Checked fit - CavityTherm Built-in Full Fill

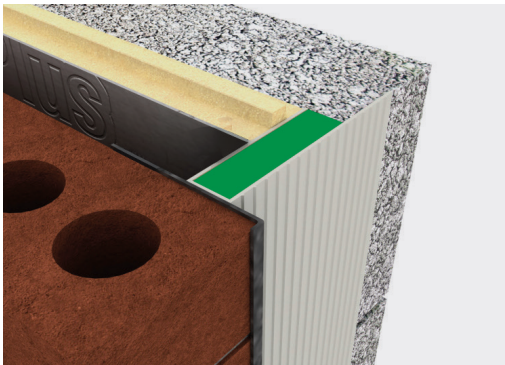


Length	Cavity Width	CavityTherm
		Thickness
2400mm	100mm	Max 100mm
2400mm	110mm	Max 110mm
2400mm	125mm	Max 125mm
2400mm	150mm	Max 150mm

Xtratherm Close-R (FR) - fire rated cavity closers

The Xtratherm Close-R (FR) Fire rated closer by Dacatie, comprises a PVC-U outer profile with encapsulated insulation. It forms a continuous fire rated insulated cavity closer providing a minimum 30 minutes integrity and is covered by BBA Certificate 98/3474.

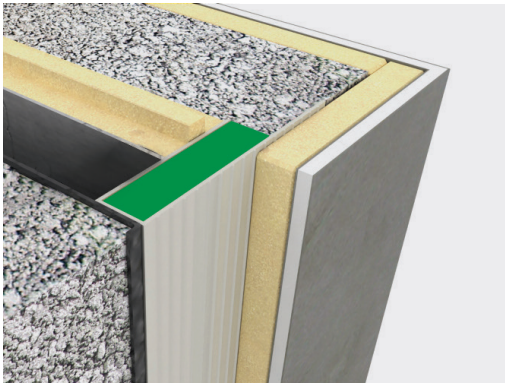
Checked fit - Brick Outer



Length	Cavity Width	XT/CW (T&G)
Thickness		
2400mm	100mm	Max 60mm
2400mm	110mm*	Max 60mm
2400mm	120mm	Max 80mm
2400mm	140mm	Max 100mm
2400mm	150mm	Max 110mm

*Available subject to minimum order quantity and lead times

Checked fit - Plus Thermal Liner (Enhanced Accredited Detail)



Length	Cavity Width	XT/CW (T&G)
Thickness		
2400mm	100mm	Max 60mm
2400mm	110mm*	Max 60mm

*Available subject to minimum order quantity and lead times

Expect More **KNOWLEDGE**

At Xtratherm we understand the importance of giving our customers the best technical advice.

We have taken the unique industry step of training every one of our technical team that deals directly with our customers, to the highest industry standards of competency in U-Value calculation and condensation risk analysis. We have Thermal Bridging covered also under the BRE/NSAI Thermal modelling competency scheme, using the most comprehensive 3D software available.

Our team and products are certified in Ireland and the UK and through the following certifications bodies:

- BRE Thermal bridging modelling competency certification
- NSAI Thermal modelling competency scheme
- TIMSA-BBA competency scheme for U-Value calculation and condensation risk analysis
- BBA and NSAI certification of the Xtratherm insulation boards
- SAP and DEAP energy assessment

Our technical team can also provide:

- Thermal calculations
- Technical advice on building regulations in Ireland and the UK
- Technical papers on a variety of topics
- Certified CPD Presentations
- BIM modelling
- NBS Specifications
- Educational resources for technical secondary and tertiary colleges

Please refer to the Resources section of our website for more details



The **Xtratherm** Innovation Centre

The Xtratherm exhibition space and training academy has been developed to assist construction professionals in understanding the principles of specifying and achieving on-site, best practice insulation standards for new dwellings, commercial envelope solutions and refurbishment projects.



Get in touch

Dedicated
Technical Team:
IRL: 046 906 6050
F +353 (0)46 906 6090

Thermal Calculations, Technical
Advice or to arrange a technical visit:
info@xtratherm.ie

Xtratherm[®]

More than insulation

The Sustainable Solution

Specifying Xtratherm is a real commitment to minimising energy consumption, harmful CO² emissions and their impact on the environment. Using our products is one of the most effective ways to reduce energy consumption – in fact, after just eight months the energy they save far outweighs the energy used in their production. In addition, our manufacturing facilities operate to an ISO 14001 certified Environmental Management System.

The BRE Green Guide

The 2008 Green Guide to Specification produced by the BRE gives Xtratherm Insulation products a rating of A or A+. Green Guide ratings are used to gain credits in BREEAM (BRE Environmental Assessment Method) for non-residential buildings, and under 'Mat 4 – Insulation' the first credit requires the building to have an Insulation Index of 2 or greater – only achievable if the weighted average rating of the insulation is A or A+. This shows that all our products have been made with materials that have been responsibly sourced. The standard sets out organisational governance, supply chain management and environmental and social aspects that are verified and ensure responsible sourcing of materials.

Responsible Sourcing

Xtratherm has BES 6001 certification for responsible sourcing. The second BREEAM credit under that category is based on responsibly-sourced materials – at least 80% of the total insulation used in roofs, walls, ground floors and services must meet any of tier levels 1 to 6 in the BREEAM table of certification schemes. Our Environmental Management System is certified under EN ISO 14001, and our raw materials come from companies with similarly-certified EMS (copies of all certificates are available for BREEAM assessments). This level of responsible sourcing meets tier level 6 in the BREEAM table.

Global Warming and Ozone Depletion

All Xtratherm Insulation products use CFC- and HCFC-free materials, and are manufactured using a blowing agent with a low GWP and zero ODP.

Good workmanship and appropriate site procedures are necessary to achieve expected thermal and airtightness performance. Installation should be undertaken by professional tradespersons. The example calculations are indicative only, for specific U-Value calculations contact Xtratherm Technical Support. Xtratherm technical literature, Agrément certifications and Declarations of Performance are available for download on the Xtratherm website. The information contained in this publication is, to the best of our knowledge, true and accurate at the time of publication but any recommendations or suggestions which may be made are without guarantee since the conditions of use are beyond our control. Updated resources may be available on our websites. All images and content within this publication remain the property of Xtratherm.

Xtratherm Limited

Liscarton Industrial Estate
Kells Road, Navan
Co. Meath, Ireland
C15 NP79

T +353 (0)46 906 6000
F +353 (0)46 906 6090

info@xtratherm.ie

xtratherm.ie

ISO 9001 | Quality Management Systems

ISO 14001 | Environmental Management Systems



Xtratherm, part of UNILIN group.

IBXTOR44-5