



Shield Only



Projecting Bolt



Loose Bolt

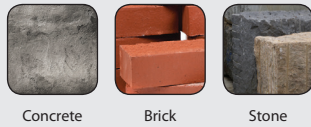
Product Information

- Traditional torque controlled expansion anchor for installation of racking, hand rails, barriers and storage systems.

Key Features

- Three piece segmented body.
- Captive expansion cone.
- Zinc and Yellow passivated (3-5 Microns)
- Stud grade 5.8.
- Bolt grade 8.8 (high tensile).

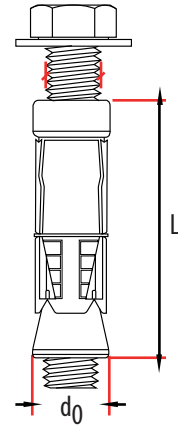
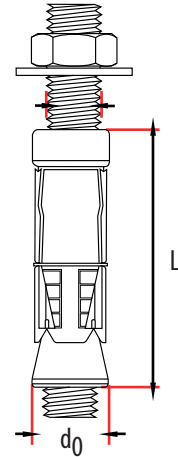
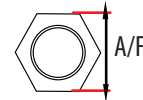
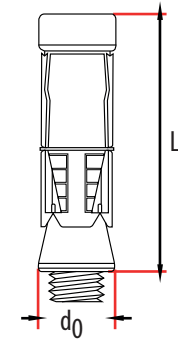
Materials



Concrete

Brick

Stone



L - Length
d₀ - Drill Size

Technical Data

Substrate	Concrete ≥ 25 N/mm ²				Fletton Brick - 30 N/mm ²				Cheshire Brick - 45 N/mm ²				Class B Eng. Brick - 75 N/mm ²				
	M6	M8	M10	M12	M16	M6	M8	M10	M12	M6	M8	M10	M12	M6	M8	M10	M12
Size Ø (mm)	12	14	16	20	24	12	14	16	20	12	14	16	20	12	14	16	20
Drill Hole Ø (mm) d ₀	12	14	16	20	24	12	14	16	20	12	14	16	20	12	14	16	20
Embedment Depth (mm) h _{ef}	45	50	60	75	95	45	50	60	75	45	50	60	75	45	50	60	75
Min Drill Hole Depth (mm) h ₀	55	60	70	85	105	55	60	70	85	55	60	70	85	55	60	70	85
Centre Spacing (mm) S _{min}	135	150	180	225	285	-	-	-	-	-	-	-	-	-	-	-	-
Edge Distance (mm) C _{min}	70	75	90	120	145	-	-	-	-	-	-	-	-	-	-	-	-
Min Structure Thickness (mm)	90	100	120	150	190	-	-	-	-	-	-	-	-	-	-	-	-
Rec. Tightening Torque (Nm)	5	15	30	45	100	3	7	15	23	3	7	15	23	3	7	15	23
Rec. Tensile Load (kN) N _{rec}	1.04	2.21	2.52	3.80	-	1.47	1.84	1.26	1.34	0.63	1.67	1.93	1.51	0.72	0.41	0.85	-

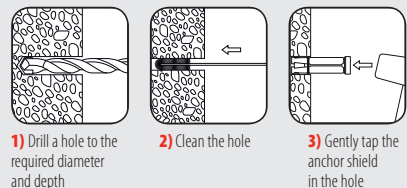
NB: The tensile load tests are based upon the use of 8.8 strength bolts. However, the 'Projecting Type' are supplied with 5.8 strength bolts. This should nevertheless not unduly effect the performance of the anchor, given that this is taken into consideration when selecting the product. Please consult our technical department for further advice. Fix in centre line of brick 35-40mm from ends and avoid top 3 courses, edge bricks, part bricks and mortar joints. Suitable in solid brickwork with sound mortar joints only up to M12 bolt diameter.



Shield Only

TIMco Code	Thread Ø (mm)	Shield Length (mm) L	Box Qty	Carton Qty
06SH	M6	45	50	900
08SH	M8	50	50	500
10SH	M10	60	50	400
12SH	M12	75	25	200

Installation Guide

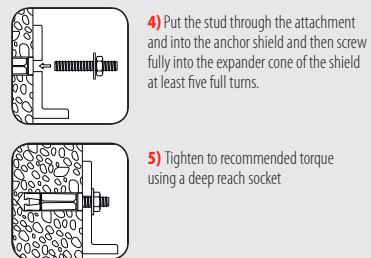


Projecting Bolt - Grade 5.8

TIMco Code	Thread Ø (mm)	Stud (Bolt) Length (mm)	Max Fixture Thickness (mm) t_{fix}	Fixture Clearance Hole Ø (mm) d_f	A/F (mm)	Box Qty	Carton Qty
0660PSH	M6	110	60	8	10	50	500
0810PSH	M8	70	10	10	13	50	400
0825PSH	M8	85	25	10	13	50	400
0860PSH	M8	120	60	10	13	50	400
1015PSH	M10	85	15	12	17	25	250
1030PSH	M10	100	30	12	17	25	200
1060PSH	M10	130	60	12	17	25	200
1215PSH	M12	105	15	14	19	10	100
1230PSH	M12	120	30	14	19	10	100
1275PSH	M12	165	75	14	19	10	80
1635PSH	M16	160	35	18	24	10	60

Projecting Bolt

Follow stages 1 - 3 for shield first.

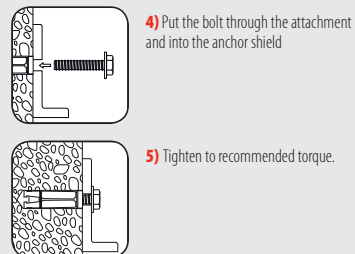


Loose Bolt - Grade 8.8

TIMco Code	Thread Ø (mm)	Bolt Length (mm)	Max Fixture Thickness (mm) t_{fix}	Fixture Clearance Hole Ø (mm) d_f	A/F (mm)	Box Qty	Carton Qty
0610LSH	M6	50	10	8	10	100	800
0625LSH	M6	65	25	8	10	50	500
0810LSH	M8	60	10	10	13	50	400
0825LSH	M8	75	25	10	13	50	400
0840LSH	M8	90	40	10	13	25	250
1010LSH	M10	70	10	12	17	25	250
1025LSH	M10	85	25	12	17	25	250
1050LSH	M10	110	50	12	17	25	200
1075LSH	M10	135	75	12	17	25	200
1210LSH	M12	90	10	14	19	10	100
1225LSH	M12	105	25	14	19	10	100
1240LSH	M12	120	40	14	19	10	100
1260LSH	M12	140	60	14	19	10	80
1630LSH	M16	135	30	18	24	10	60
1660LSH	M16	165	60	18	24	10	60

Loose Bolt

Follow stages 1 - 3 for shield first.



Note: Max fixture thickness must not be exceeded.

Applications

