

QUINN ROOFTILES

LOCHERNE

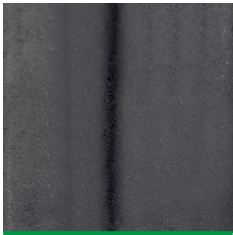
Quinn Rooftiles are manufactured to the latest European standard BS EN 490. Every Tile produced carries with it the Kitemark seal of approval that confirms our products outstanding quality and appeal. Quinn Rooftiles have sustained investment to manufacture Rooftiles of outstanding quality, character and style.

Description

Our Double Pantile forms a gentle flowing pattern that gives instant visual appeal and is also available in five colours. It performs on pitches as low as 17.5 and combines its exceptional strength and beautiful smooth surface with stunning aesthetics.



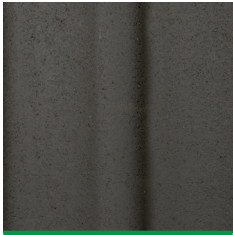
Clay Red



Matt Black



Rustic Mix



Slate Grey



Turf Brown

Packaging

No. of tiles/pallet - 192

Technical Properties

Size	420mm x 334mm			
Minimum Pitch	17.5°			
Maximum Pitch	90°			
Headlap (min/max)	<b>17.5° - 22.5°</b> 100mm (min) 140mm (max)  <b>above 22.5°</b> 75mm (min) 140mm (max)			
Maximum Gauge	345mm			
Linear cover	300mm - 302mm			
Covering Capacity	Headlap	Gauge	No. Tiles/m²	
	75mm	345mm	9.7	
	100mm	320mm	10.4	
Surface	Smooth			
Weight (approx.)	at 320 gauge 52kg/m²			
Weight (approx.)	5 tonnes per (1,000 tiles)			
Nominal Batten size (mm)*	Rafter Centres (mm)			
	UK		ROI	
	≤450	451-600	≤400	401-600
	38x25	50x25	50x36	50x36
Battens required (nett)	3.1 metre/m² (at 320mm gauge)			
Abutment	Secret Gutter (cover Flashing)			
Eaves	Standard Tile			
Ridge/Hip	457mm 1/2 round Ridge Tile butt-jointed			
Valley	Open metal valley / Open trough valley lead lining (or other approved lining)			

\* Note: Refer to National Standard

Fixings

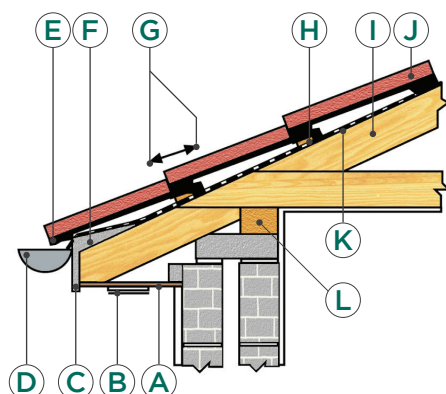
For a full range of fixing alternatives and requirements please refer to BS 5534

Nails	70mm x 3.35mm alloy ringshank
Batten Fixing	Standard Locherne Tile Clip
Eave Fixing	Standard Locherne Eave Clip
Verge Fixing	Standard Locherne Verge Clip - Mortar bedding on mineral fibre strip Quinn dry verge system (individual units)

# QUINN ROOFTILES

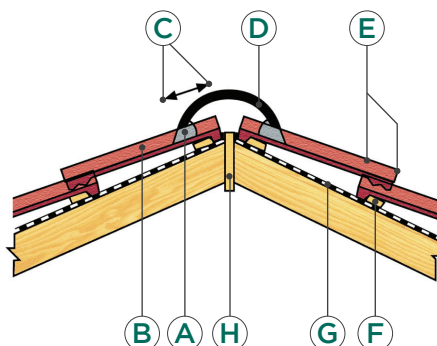
## LOCHERNE

### EAVES DETAILS



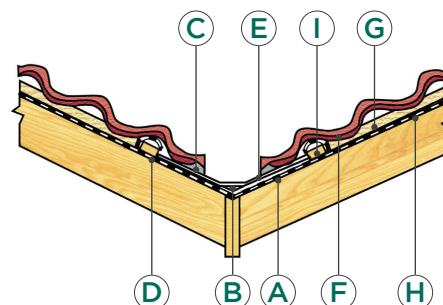
- A Soffit
- B 75 x 225 Ventilator
- C Fascia Board
- D Gutter
- E Eaves Filler
- F Fillet
- G Headlap (75mm Min)
- H Batten
- I 345mm Max Gauge
- J Locherne Tile
- K Felt
- L Wall Plate

### SECTION THROUGH RIDGE



- A Mortar
- B Locherne Tile
- C Headlap (75mm Min)
- D Half Rounded Ridge Tile
- E Headlap (75mm Min)
- F Batten
- G Felt
- H Ridge Board

### SECTION THROUGH VALLEY



- A Valley Boarding
- B Lead Lining
- C Mortar Bedding
- D 600mm Felt Strip
- E Slate Undercloak
- F Locherne Tile Cut to Rake
- G Batten
- H Felt
- I Counter Batten

### TILES

The roof is to be covered with LOCHERNE Double pantiles as per sample approved and laid in even courses of not more than 345mm gauge and not less than 75mm headlap.

### BATTENS

Approved quality softwood tiling battens to be laid to the correct gauge determined by the roof pitch (see Technical Information). The joints of the battens should always meet half way across top of rafters. See overleaf for Batten sizes.

### VALLEYS

Valley dimensions for roof products should conform to the minimum recommendations show in figures 4 and 5. of SR 82 and table 11 of BS 5534. Valley should be constructed in accordance with the guidance given in BS 5534 and SR 82.

### UNDERLAY

Underlay should have adequate resistance and stiffness against wind uplift loads, and the roof designed so that when uplift occurs there is no contact with the underside of the tile. Suitability of the type of underlay will depend on factors such as roof pitch and whether it is supported or unsupported.

### VERGES

Where the verge is to be wet bedded, the fibre cement undercloak should be laid and fixed (rough side up) to give the required overhang and should be a minimum 150mm wide. On masonry walls the undercloak should be bedded in mortar or mastic. On timber rafters/barge boards the undercloak should be fixed securely with clout nails. A minimum 100mm fully compressed bed of mortar should be laid onto the undercloak for bedding on to. Quinn dry verge systems are a preferred alternative. Locherne tile must use the individual unit system. The fixing instruction should be read prior to installation and strictly adhered to.

### RIDGE AND HIP

The ridges and hips are to be covered with Half Round Ridge tiles. The ridge tiles must provide a minimum cover of 75mm over the top course of tiles and fixed in accordance with BS 5534. Hip tiles should be bedded in mortar or laid dry using a proprietary system. Where bedded in mortar, mechanical fixings including hip irons may be required.

### EAVES

Eaves to be formed with standard tiles and eaves filler supplied by manufacturer. The eaves course must be laid at the same pitch as the rest of the roof.

### ABUTMENTS

All tiles located adjacent to the abutment should be fitted or cut close to its face. All tiles at the abutment must be mechanically fixed as perimeter tiles. Flashing and gutter details should be followed as per the national standard in the place of use.